



Pawprint - Narrowboat

£37,500

Pawprint is a 40ft Cruiser built in 1993 by P. Hudson with features like a Beta Marine engine, Boatman solid fuel stove, sleeping space for three, bathroom with shower and toilet, galley with cooker and fridge. BSC until 2024, blacked in 2020, and is ready for sailing adventures.

- Cruiser Stern
- Beta Marine Engine
- 40ft by 6ft 10'
- Staffordshire



Scan here for the
3D Tour

Boat Specification

Plating Specification: Steel (Thickness Unknown)
Hull Shape: Flat
Flooring: Wooden
Cabin Sides: Tongue & Groove
Insulation: Unknown
Windows: Top Opening

Engine Details

Engine Make/Model: Beta Marine 30hp Approx
No. Cylinders: Three
Cooling Type: Unknown
Gear Box Make/Model: Hurth
Fuel Type: Diesel
Fuel Tank Capacity: 30g approx
Bow Thruster: n/a
Additional Information:

Hot Water & Heating

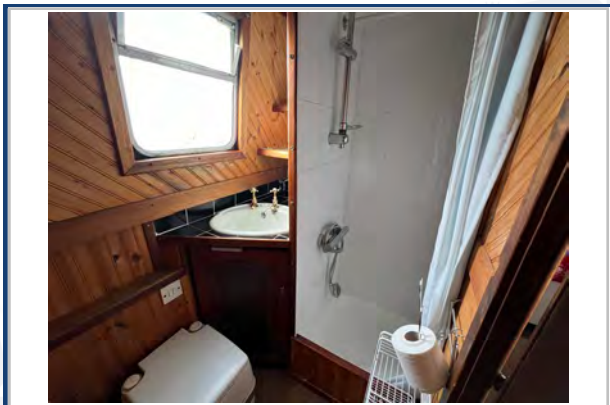
Hot Water Source: Calorifier
Central Heating: n/a
Stove Make/Type: Boatman Solid Fuel Stove
Water Tank Capacity: 80g approx

Electrical System

12v: Yes
240v: Yes
Inverter: Sterling Pro Combi S
Generator: n/a
Batteries: 1 Starter, 3 Leisure
Solar Panels: One
Notes:



Viewings by appointment
only. Please call us to arrange.



Galley

Cooker: Yes
Fridge/Freezer: Dometic
Gas/12v/240v:: 12v/240v
Additional Information:

Accommodation

No. of Berths: Three
Fixed: n/a
Additional Berths: Double Bed converts into a dinette.
Sofa Bed as a single.

Bathroom

Toilet: Cassette
Bath / Shower: Shower
Vanity Basin: Yes
Additional Information:

Vessel History

BSC/RCD: BSC 2024
Maintenance: Blacked 2020 with epoxy

Additional Information

Pram & Cratch Cover.

Please Note:

No guarantee is given or implied with regards to specification but descriptions are given in good faith. All vessels are sold without warranty or condition as to the fitness either expressed or implied by status or otherwise. No appliances or systems have been tested. All measurements stated are approximate. These details are not intended to, and do not, form any part of any current or future contract. In this transaction we are acting as Brokers only. All sales subject to contract. We are relying on information supplied solely by the seller and the Company cannot be held responsible or liable if information is proven to be inaccurate. All information is given as a guide. Plating thickness cannot be measured during Nationwide Boat Sales visit while the boat is in the water and is based on information supplied by the owner. A prospective buyer is strongly advised to check the particulars and where appropriate at their own expense to employ a qualified insured Marine Surveyor to carry out a survey of the vessel. It is ultimately the responsibility of the buyer to ensure that all the particulars are accurate prior or during the purchase of the boat. Nationwide Boat Sales advises that a qualified independent surveyor carries out a full out of water survey for every vessel.