



Oberon - Narrowboat

£9,950

Introducing Oberon, a 58ft Semi-Trad built by Pat Buckle. Oberon has been priced to reflect the need for some work. The sides and base plate require replating, offering a fantastic opportunity for someone.

- Semi-Traditional Stern
- Kubota Engine
- 58ft by 6ft 10'
- Staffordshire



Scan here for the
3D Tour

Boat Specification

Plating Specification:	Steel
Hull Shape:	Flat Bottom
Flooring:	Unknown
Cabin Sides:	Painted Ply
Insulation:	Unknown
Windows:	Top Opening

Engine Details

Engine Make/Model:	Kubota
No. Cylinders:	Four
Cooling Type:	Keel
Gear Box Make/Model:	PRM
Fuel Type:	Diesel
Fuel Tank Capacity:	40g approx
Bow Thruster:	n/a

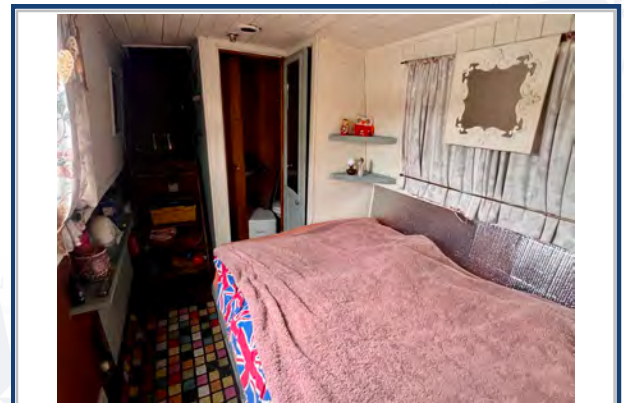
Additional Information:

Hot Water & Heating

Hot Water Source:	Calorifier
Central Heating:	Alde
Stove Make/Type:	Solid Fuel Stove
Water Tank Capacity:	100g approx

Electrical System

12v:	Yes
240v:	Yes
Inverter:	1000w inverter
Generator:	n/a
Batteries:	1 starter, 2 leisure
Solar Panels:	Yes
Notes:	Gel batteries.



Viewings by appointment
only. Please call us to arrange.



Galley

Cooker: Yes (non working)
 Fridge/Freezer: Yes
 Gas/12v/240v:: 12v
 Additional Information:

Accommodation

No. of Berths: Four
 Fixed: Fixed Double
 Additional Berths: L-shaped dinette seating into a double.

Bathroom

Toilet: Pump Out
 Bath / Shower: Shower over bath
 Vanity Basin: Yes
 Additional Information: Two bathrooms on board.

Vessel History

BSC/RCD: BSC 2026
 Maintenance: Blacked 2021

Additional Information

Side Hatch. Pram Cover.

Please Note:

No guarantee is given or implied with regards to specification but descriptions are given in good faith. All vessels are sold without warranty or condition as to the fitness either expressed or implied by status or otherwise. No appliances or systems have been tested. All measurements stated are approximate. These details are not intended to, and do not, form any part of any current or future contract. In this transaction we are acting as Brokers only. All sales subject to contract. We are relying on information supplied solely by the seller and the Company cannot be held responsible or liable if information is proven to be inaccurate. All information is given as a guide. Plating thickness cannot be measured during Nationwide Boat Sales visit while the boat is in the water and is based on information supplied by the owner. A prospective buyer is strongly advised to check the particulars and where appropriate at their own expense to employ a qualified insured Marine Surveyor to carry out a survey of the vessel. It is ultimately the responsibility of the buyer to ensure that all the particulars are accurate prior or during the purchase of the boat. Nationwide Boat Sales advises that a qualified independent surveyor carries out a full out of water survey for every vessel.