



## Nib Y Nool - Narrowboat

£54,950

Introducing Nib Y Nool, a lovely 50ft Cruiser built and fit out by Floating Homes in 2002. With a light and airy interior, she welcomes you on board to enjoy a wealth of space and comfortable cruising.

- Cruiser Stern
- Perkins 37hp Engine
- 50ft by 6ft 10'
- Cheshire



Scan here for the  
3D Tour

## Boat Specification

Plating Specification: Steel 10/6/4  
 Hull Shape: Flat Bottom  
 Flooring: T&G Vinyl over Plywood  
 Cabin Sides: Ply  
 Insulation: Unknown  
 Windows: Large Opening

## Engine Details

Engine Make/Model: Perkins 37hp  
 No. Cylinders: Four  
 Cooling Type: Keel  
 Gear Box Make/Model: PRM  
 Fuel Type: Diesel  
 Fuel Tank Capacity: 40g approx  
 Bow Thruster: n/a

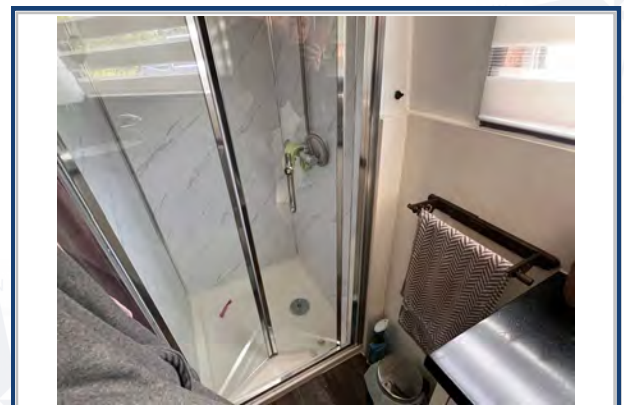
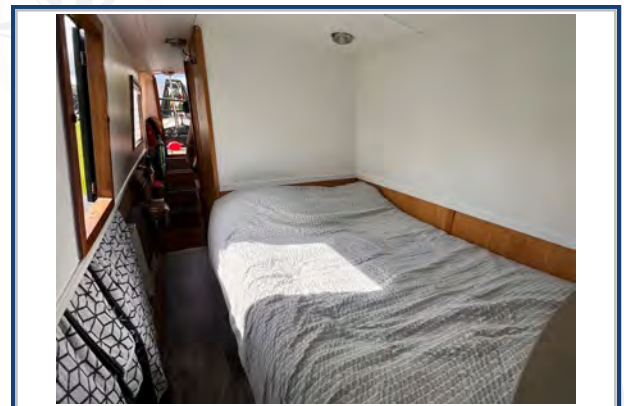
Additional Information:

## Hot Water & Heating

Hot Water Source: Calorifier/Webasto  
 Central Heating: Webasto  
 Stove Make/Type: Multifuel Stove  
 Water Tank Capacity: 100g approx

## Electrical System

12v: Yes  
 240v: Yes  
 Inverter: Sterling 2.8kw  
 Generator: n/a  
 Batteries: 1 Starter, 3 Leisure  
 Solar Panels: 3 Solar Panels  
 Notes:



Viewings by appointment  
only. Please call us to arrange.



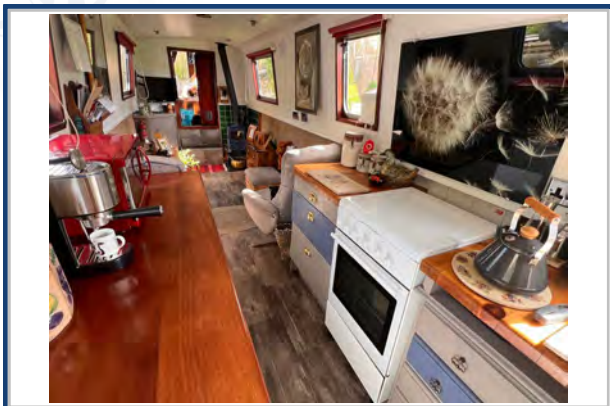
## Galley

Cooker: New World  
 Fridge/Freezer: Shoreline  
 Gas/12v/240v:: 12v  
 Additional Information: 240v Washing Machine



## Accommodation

No. of Berths: Two  
 Fixed: Double Bed  
 Additional Berths: n/a



## Bathroom

Toilet: Porta Potti  
 Bath / Shower: Shower  
 Vanity Basin: Yes  
 Additional Information:



## Vessel History

BSC/RCD: BSC July 2027  
 Maintenance: Blacked Sept 2022. Sides Blacked 2023  
 Serviced 2022. Repainted 2017.

## Additional Information

Side Hatch & Cratch Cover

Please Note:

No guarantee is given or implied with regards to specification but descriptions are given in good faith. All vessels are sold without warranty or condition as to the fitness either expressed or implied by status or otherwise. No appliances or systems have been tested. All measurements stated are approximate. These details are not intended to, and do not, form any part of any current or future contract. In this transaction we are acting as Brokers only. All sales subject to contract. We are relying on information supplied solely by the seller and the Company cannot be held responsible or liable if information is proven to be inaccurate. All information is given as a guide. Plating thickness cannot be measured during Nationwide Boat Sales visit while the boat is in the water and is based on information supplied by the owner. A prospective buyer is strongly advised to check the particulars and where appropriate at their own expense to employ a qualified insured Marine Surveyor to carry out a survey of the vessel. It is ultimately the responsibility of the buyer to ensure that all the particulars are accurate prior or during the purchase of the boat. Nationwide Boat Sales advises that a qualified independent surveyor carries out a full out of water survey for every vessel.