



Me, You And A Dog Named Boo - Narrowboat

£64,950

Introducing You, Me And A Dog Named Boo, a wonderful 57ft Cruiser built by Collingwood in 2017. With a host of storage throughout and a huge amount of solar she is an ideal self sufficient live aboard boat.

- Cruiser Stern
- Canaline 38hp Engine
- 57ft by 6ft 10'
- Staffordshire



Scan here for the
3D Tour

Boat Specification

Plating Specification: Steel 10/6/4
Hull Shape: Flat Bottom
Flooring: Laminate
Cabin Sides: Ply
Insulation: Sprayfoam
Windows: Portholes

Engine Details

Engine Make/Model: Canaline 38hp
No. Cylinders: Four
Cooling Type: Keel
Gear Box Make/Model: PRM 125
Fuel Type: Diesel
Fuel Tank Capacity: 40g approx
Bow Thruster: Tube fitted

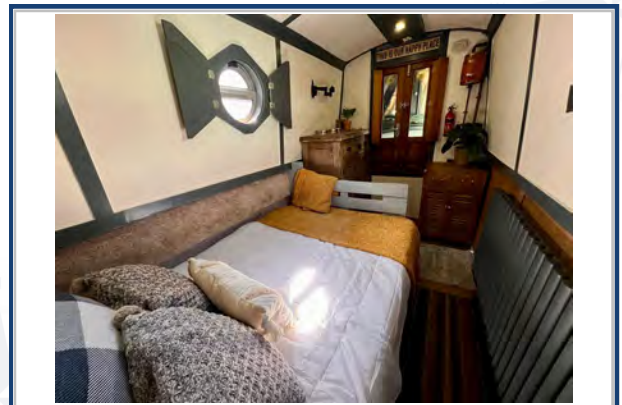
Additional Information:

Hot Water & Heating

Hot Water Source: Calorifier/Immersion/Backboiler
Central Heating: Backboiler
Stove Make/Type: Morso Squirrel
Water Tank Capacity: 100g approx

Electrical System

12v: Yes
240v: Yes
Inverter: Edecoa 2000w Pure Sine Wave
Generator: n/a
Batteries: 1 starter, 3 leisure
Solar Panels: 1075w of solar with MPPT controller
Notes: Sterling Procharge Ultra battery charger with inverter remote. Victron battery monitor. AGM batteries.



Viewings by appointment only. Please call us to arrange.



Galley

Cooker: Yes
 Fridge/Freezer: Shoreline with freezer compartment
 Gas/12v/240v:: 12v
 Additional Information: Beko washing machine and separate twin tub. Laminate worktops.

Accommodation

No. of Berths: Four
 Fixed: Double Bed
 Additional Berths: Single bunks

Bathroom

Toilet: Compost
 Bath / Shower: Shower
 Vanity Basin: Yes
 Additional Information: Walkthrough Bathroom

Vessel History

BSC/RCD: BSC March 2025.
 Maintenance: Blacked & engine serviced April 2024

Recent survey 2024.

Additional Information

Cratch cover.
 Self sufficient boat ideal as a liveaboard.

Please Note:

No guarantee is given or implied with regards to specification but descriptions are given in good faith. All vessels are sold without warranty or condition as to the fitness either expressed or implied by status or otherwise. No appliances or systems have been tested. All measurements stated are approximate. These details are not intended to, and do not, form any part of any current or future contract. In this transaction we are acting as Brokers only. All sales subject to contract. We are relying on information supplied solely by the seller and the Company cannot be held responsible or liable if information is proven to be inaccurate. All information is given as a guide. Plating thickness cannot be measured during Nationwide Boat Sales visit while the boat is in the water and is based on information supplied by the owner. A prospective buyer is strongly advised to check the particulars and where appropriate at their own expense to employ a qualified insured Marine Surveyor to carry out a survey of the vessel. It is ultimately the responsibility of the buyer to ensure that all the particulars are accurate prior or during the purchase of the boat. Nationwide Boat Sales advises that a qualified independent surveyor carries out a full out of water survey for every vessel.