



## Lily - Narrowboat

£109,950

Introducing Lily, a magnificent 70ft Trad built by a former employee of R.W Davis and Sons in 2014. With a boatman's cabin and a wonderful engine room housing the Ailsa Craig RM4 engine. A truly wonderful vessel.

- Traditional Stern
- Ailsa Craig RM4 Engine
- 70ft by 6ft 10'
- Warwickshire



Scan here for the  
3D Tour

## Boat Specification

Plating Specification: Steel 10/6/4  
 Hull Shape: Flat  
 Flooring: Solid Wood  
 Cabin Sides: Painted Ply  
 Insulation: Unknown  
 Windows: Portholes

## Engine Details

Engine Make/Model: Ailsa Craig RM4  
 No. Cylinders: 4  
 Cooling Type: Keel  
 Gear Box Make/Model: Unknown  
 Fuel Type: Diesel  
 Fuel Tank Capacity: 40G approx  
 Bow Thruster: n/a

Additional Information:

## Hot Water & Heating

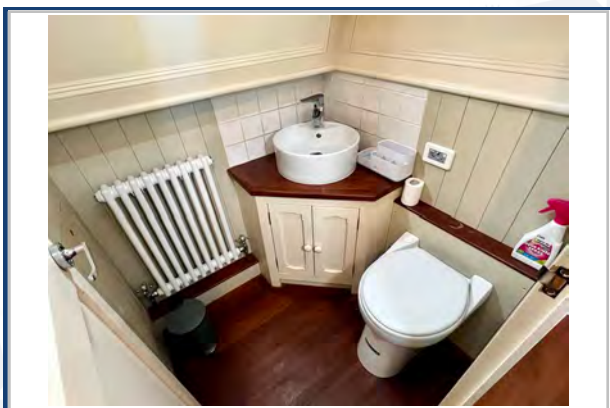
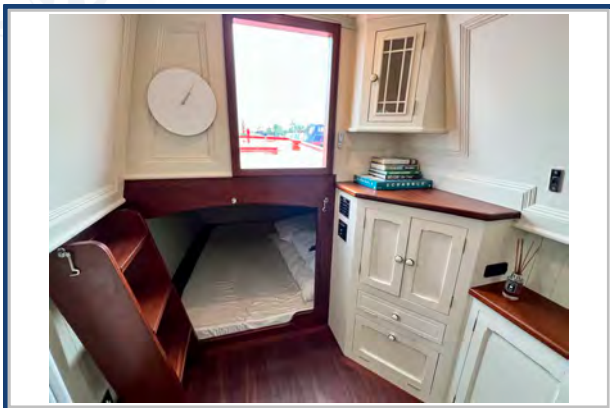
Hot Water Source: Calorifier/Heritage Stove  
 Central Heating: Heritage Stove  
 Stove Make/Type: Yes  
 Water Tank Capacity: 100G approx

## Electrical System

12v: Yes  
 240v: Yes  
 Inverter: Victron Quattro 3kw  
 Generator: Beta Generator 9kva  
 Batteries: 1 Starter, 4 Leisure  
 Solar Panels: Solar Panels  
 Notes: MPPT Controller



Viewings by appointment  
only. Please call us to arrange.



## Galley

Cooker: Heritage Range Cooker (Oil Fired)  
 Fridge/Freezer: Shoreline  
 Gas/12v/240v:: 12v  
 Additional Information: LG Washing Machine  
 Solid Wood handmade galley.

## Accommodation

No. of Berths: Six  
 Fixed: Double under bow.  
 Additional Berths: Dinette Conversion & Pull down within the boatman's cabin.

## Bathroom

Toilet: Sani Marin  
 Bath / Shower: Shower  
 Vanity Basin: Yes  
 Additional Information:

## Vessel History

BSC/RCD: BSC 2026  
 Maintenance: Blacked 2021. Engine Serviced 2022

## Additional Information

Boatman's Cabin. Engine Room. 4 Side Hatches.

Please Note:

No guarantee is given or implied with regards to specification but descriptions are given in good faith. All vessels are sold without warranty or condition as to the fitness either expressed or implied by status or otherwise. No appliances or systems have been tested. All measurements stated are approximate. These details are not intended to, and do not, form any part of any current or future contract. In this transaction we are acting as Brokers only. All sales subject to contract. We are relying on information supplied solely by the seller and the Company cannot be held responsible or liable if information is proven to be inaccurate. All information is given as a guide. Plating thickness cannot be measured during Nationwide Boat Sales visit while the boat is in the water and is based on information supplied by the owner. A prospective buyer is strongly advised to check the particulars and where appropriate at their own expense to employ a qualified insured Marine Surveyor to carry out a survey of the vessel. It is ultimately the responsibility of the buyer to ensure that all the particulars are accurate prior or during the purchase of the boat. Nationwide Boat Sales advises that a qualified independent surveyor carries out a full out of water survey for every vessel.