



## Narrowboat

£119,950

Introducing a beautifully designed 58ft Semi-Trad Narrowboat with the shell built by XR & D with an owner fit out, launched in 2023. Currently Unnamed she allows you to truly make her your own.

- Cruiser Stern
- Beta Marine 43hp Engine
- 58ft by 6ft 10'
- Staffordshire



Scan here for the  
3D Tour



## Boat Specification

Plating Specification:	Steel 10/6/4
Hull Shape:	Flat Bottom
Flooring:	Engineered Oak Parquet
Cabin Sides:	Painted Ply
Insulation:	50mm Kingspan
Windows:	Thermal Break Double Glazed

## Engine Details

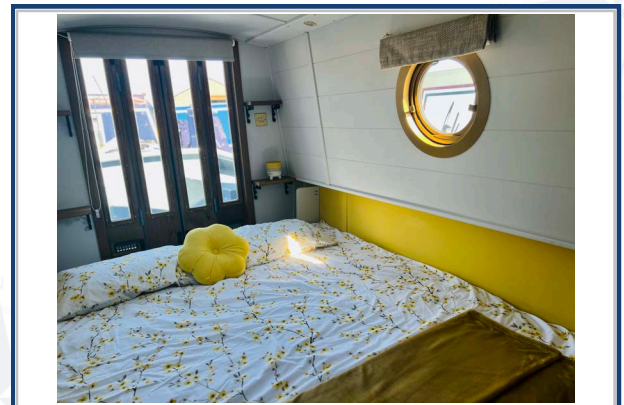
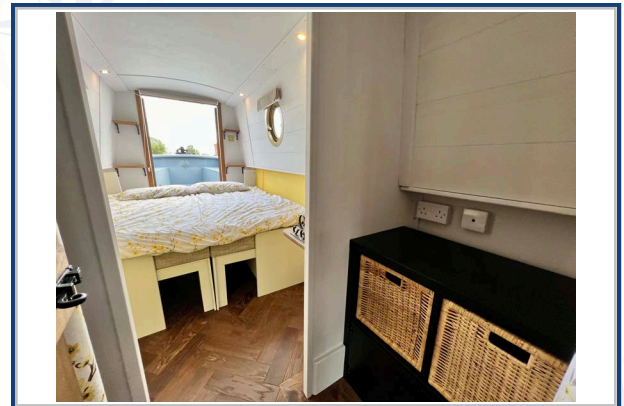
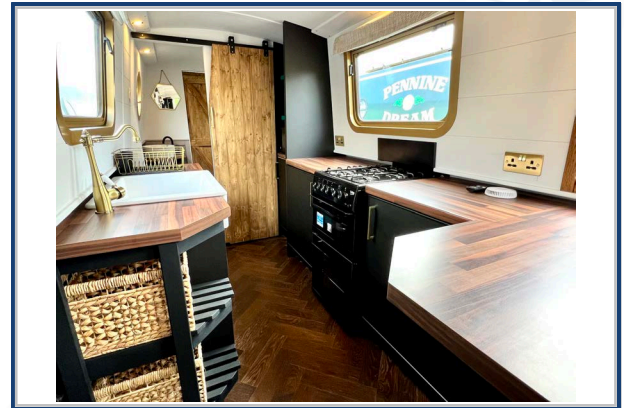
Engine Make/Model:	Beta Marine 43hp
No. Cylinders:	Four
Cooling Type:	Keel
Gear Box Make/Model:	PRM 150
Fuel Type:	Diesel
Fuel Tank Capacity:	100G approx
Bow Thruster:	Tubes fitted for Bow Thruster
Additional Information:	

## Hot Water & Heating

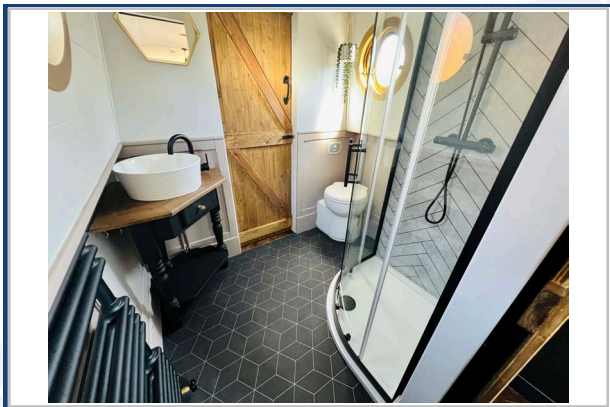
Hot Water Source:	Calorifier (55L) / Eberspacher
Central Heating:	Eberspacher (D5 Hydro Heater)
Stove Make/Type:	Morso Squirrel with twin lined flue
Water Tank Capacity:	400L (Raised water fill point)

## Electrical System

12v:	Yes
240v:	Yes
Inverter:	Victron 3kw Multiplus
Generator:	n/a
Batteries:	1 starter, 4 leisure
Solar Panels:	2 x 175w Victron Solar Panels
Notes:	Controller 12v Lighting, 240v sockets



**Viewings by appointment  
only. Please call us to arrange.**



## Galley

Cooker: Beko & 4 Burner Hob

Fridge/Freezer: Yes

Gas/12v/240v:: 240v

**Additional Information:** Microwave, Breakfast Bar, Belfast style sink

Connections in place for a Washing machine, Walnut effect worktop.

## Accommodation

No. of Berths: Four

Fixed: Pull out double with storage beneath

Additional Berths: Double Sofa Bed

## Bathroom

Toilet: Thetford Electric Flush Cassette

Bath / Shower: Full Size Corner Shower

Vanity Basin: Yes

**Additional Information:** Storage behind shower enclosure,

Aluminum cast style towel radiator, Walkthrough Bathroom

## Vessel History

BSC/RCD: RCD

Maintenance: Blacked

## Additional Information

Brand New. Reverse Layout.

Side Hatch. Rear Stable Doors, Front Oak Bi-fold doors.

Walkthrough wardrobe space.

Please Note:

No guarantee is given or implied with regards to specification but descriptions are given in good faith. All vessels are sold without warranty or condition as to the fitness either expressed or implied by status or otherwise. No appliances or systems have been tested. All measurements stated are approximate. These details are not intended to, and do not, form any part of any current or future contract. In this transaction we are acting as Brokers only. All sales subject to contract. We are relying on information supplied solely by the seller and the Company cannot be held responsible or liable if information is proven to be inaccurate. All information is given as a guide. Plating thickness cannot be measured during Nationwide Boat Sales visit while the boat is in the water and is based on information supplied by the owner. A prospective buyer is strongly advised to check the particulars and where appropriate at their own expense to employ a qualified insured Marine Surveyor to carry out a survey of the vessel. It is ultimately the responsibility of the buyer to ensure that all the particulars are accurate prior or during the purchase of the boat. Nationwide Boat Sales advises that a qualified independent surveyor carries out a full out of water survey for every vessel.