



## Mickey's Dream - Narrowboat

£47,950

Mickeys Dream is a 62ft Traditional stern narrowboat built by Dave Thomas in 1993 with classic features like a boatman's cabin, a Perkins 46hp engine. Accommodating six people, The boat also includes a well-equipped galley, bathroom, Cratch Cover, side hatches, and has a BSC until Feb 2026.

- Traditional Stern
- Perkins 46hp Engine
- 62ft by 6ft 10'
- Warwickshire



Scan here for the  
3D Tour

## Boat Specification

Plating Specification:	Steel 10/6/5/4
Hull Shape:	Flat Bottom
Flooring:	Oak, Tiles & Laminate
Cabin Sides:	Tongue & Groove
Insulation:	Polystyrene
Windows:	Top Opening & Portholes

## Engine Details

Engine Make/Model:	Perkins
No. Cylinders:	Three
Cooling Type:	Keel
Gear Box Make/Model:	PRM 160
Fuel Type:	Diesel
Fuel Tank Capacity:	735 Litres
Bow Thruster:	n/a
Additional Information:	Engine Room

## Hot Water & Heating

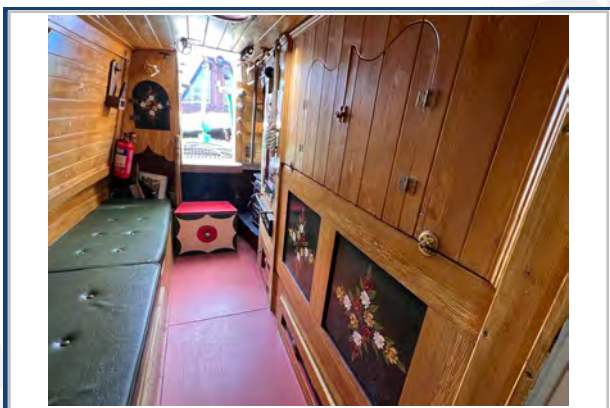
Hot Water Source:	Calorifier/Alde
Central Heating:	Alde
Stove Make/Type:	Morso Squirrel & Boatman
Water Tank Capacity:	150 gallons

## Electrical System

12v:	Yes
240v:	Yes
Inverter:	Puresine True Sign Wave 1.8kw
Generator:	n/a
Batteries:	1 Starter, 4 Leisure*
Solar Panels:	1 x Solar Panel (245w)
Notes:	*Maintenance free lead batteries MPPT controller



**Viewings by appointment  
only. Please call us to arrange.**



## Galley

Cooker: Thetford

Fridge/Freezer: Shoreline

Gas/12v/240v:: 12v

Additional Information: Washer/Dryer within the engine room.

## Accommodation

No. of Berths: Six

Fixed: Fixed Double

Additional Berths: Pull down double in the boatmans cabin  
& seating/dining area conversion into a double bed.

## Bathroom

Toilet: Cassette

Bath / Shower: Shower

Vanity Basin: Yes

Additional Information:

## Vessel History

BSC/RCD: BSC Feb 2026

Maintenance: Blacked 2023

Recent survey 2023

## Additional Information

Cratch cover.

Three side hatches.

Boatman's Cabin & Engine Room

Please Note:

No guarantee is given or implied with regards to specification but descriptions are given in good faith. All vessels are sold without warranty or condition as to the fitness either expressed or implied by status or otherwise. No appliances or systems have been tested. All measurements stated are approximate. These details are not intended to, and do not, form any part of any current or future contract. In this transaction we are acting as Brokers only. All sales subject to contract. We are relying on information supplied solely by the seller and the Company cannot be held responsible or liable if information is proven to be inaccurate. All information is given as a guide. Plating thickness cannot be measured during Nationwide Boat Sales visit while the boat is in the water and is based on information supplied by the owner. A prospective buyer is strongly advised to check the particulars and where appropriate at their own expense to employ a qualified insured Marine Surveyor to carry out a survey of the vessel. It is ultimately the responsibility of the buyer to ensure that all the particulars are accurate prior or during the purchase of the boat. Nationwide Boat Sales advises that a qualified independent surveyor carries out a full out of water survey for every vessel.