

Just Chillin - Narrowboat

£49,950

Introducing Just Chillin, a 55ft Cruiser built and fit out by Classic Narrowboats in 2007. Featuring a Beta 38hp engine, and a spacious enclosed stern she is ideal for cruising the waterways.

- Cruiser Stern
- Beta 38hp Engine
- 55ft by 6ft 10'
- Derbyshire



Scan here for the
3D Tour

Boat Specification

Plating Specification: Steel 10/6/4
 Hull Shape: Flat Bottom
 Flooring: Tiled & Laminate
 Cabin Sides: Ply
 Insulation: Sprayfoam
 Windows:

Engine Details

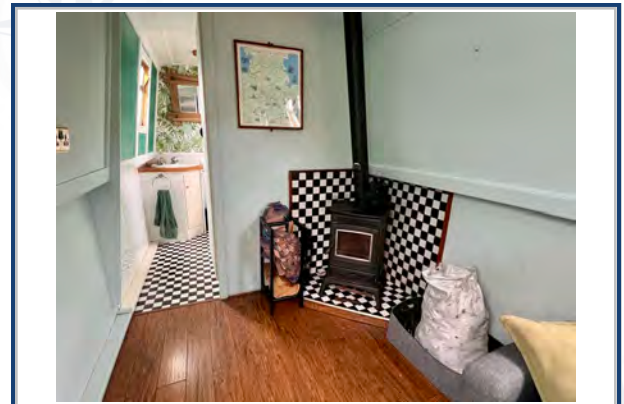
Engine Make/Model: Beta 38hp
 No. Cylinders: Four
 Cooling Type: Keel
 Gear Box Make/Model: PRM*
 Fuel Type: Diesel
 Fuel Tank Capacity: Diesel
 Bow Thruster: n/a
 Additional Information: *Newly fitted 2022

Hot Water & Heating

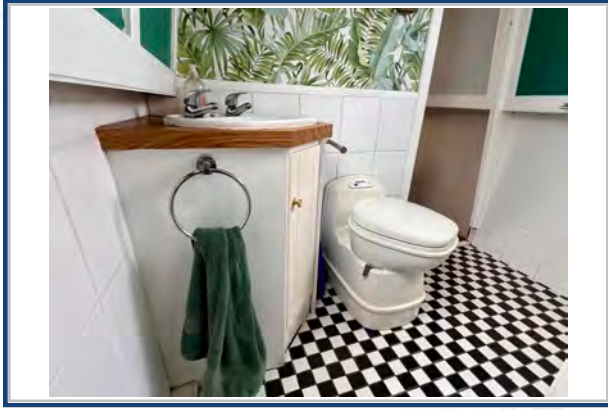
Hot Water Source: Calorifier/Immersion
 Central Heating: n/a
 Stove Make/Type: Solid Fuel Stove
 Water Tank Capacity: 100g approx

Electrical System

12v: Yes
 240v: Yes
 Inverter: Sterling Sine Wave 3kw
 Generator: n/a
 Batteries: 1 Starter, 3 Leisure
 Solar Panels: Solar inverter charger
 Notes:



Viewings by appointment
only. Please call us to arrange.



Galley

Cooker: Vanette Cooker
 Fridge/Freezer: Logik
 Gas/12v/240v:: Unknown
 Additional Information: Innex Washing Machine. Microwave

Accommodation

No. of Berths: Four
 Fixed: Double Bed
 Additional Berths: Sofa Bed

Bathroom

Toilet: Cassette
 Bath / Shower: Shower
 Vanity Basin: Yes
 Additional Information: Walkthrough Bathroom

Vessel History

BSC/RCD: BSC July 2024
 Maintenance: Blacked with new anodes 2021

Additional Information

Side Hatch

Please Note:

No guarantee is given or implied with regards to specification but descriptions are given in good faith. All vessels are sold without warranty or condition as to the fitness either expressed or implied by status or otherwise. No appliances or systems have been tested. All measurements stated are approximate. These details are not intended to, and do not, form any part of any current or future contract. In this transaction we are acting as Brokers only. All sales subject to contract. We are relying on information supplied solely by the seller and the Company cannot be held responsible or liable if information is proven to be inaccurate. All information is given as a guide. Plating thickness cannot be measured during Nationwide Boat Sales visit while the boat is in the water and is based on information supplied by the owner. A prospective buyer is strongly advised to check the particulars and where appropriate at their own expense to employ a qualified insured Marine Surveyor to carry out a survey of the vessel. It is ultimately the responsibility of the buyer to ensure that all the particulars are accurate prior or during the purchase of the boat. Nationwide Boat Sales advises that a qualified independent surveyor carries out a full out of water survey for every vessel.