

## Karma - Widebeam Cruiser

£99,950

Introducing Karma, a 60ft by 10ft widebeam built by Burscough Boats in 2012. Featuring 3 berths over 2 cabins. Beautifully presented creating a home on the water. Welcoming from the moment you step onboard.

- Widebeam Cruiser
- Canaline 60hp Engine
- 60ft by 10ft
- Bristol



Scan here for the  
3D Tour

## Boat Specification

|                        |                          |
|------------------------|--------------------------|
| Plating Specification: | Steel 10/6/4             |
| Hull Shape:            | Flat Bottom              |
| Flooring:              | Carpet, Laminate & Vinyl |
| Cabin Sides:           | Painted Ply              |
| Insulation:            | Sprayfoam                |
| Windows:               | Portholes & Oblong       |

## Engine Details

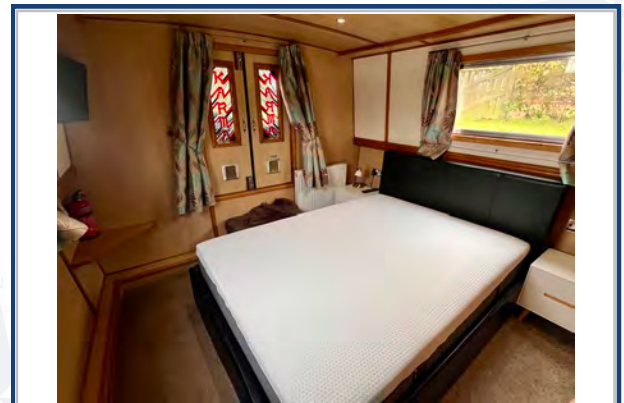
|                         |               |
|-------------------------|---------------|
| Engine Make/Model:      | Canaline 60hp |
| No. Cylinders:          | Four          |
| Cooling Type:           | Keel          |
| Gear Box Make/Model:    | PRM           |
| Fuel Type:              | Diesel        |
| Fuel Tank Capacity:     | 40g approx    |
| Bow Thruster:           | Yes           |
| Additional Information: |               |

## Hot Water & Heating

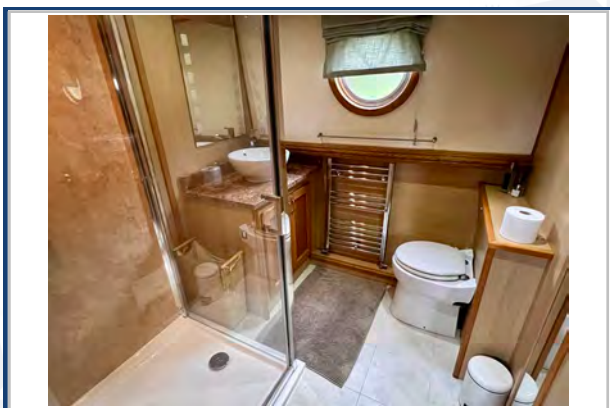
|                      |                              |
|----------------------|------------------------------|
| Hot Water Source:    | Calorifier/Webasto/Immersion |
| Central Heating:     | Webasto                      |
| Stove Make/Type:     | Morso Squirrel               |
| Water Tank Capacity: | 100g approx                  |

## Electrical System

|               |  |
|---------------|--|
| 12v:          | Yes                                    |
| 240v:         | Yes                                    |
| Inverter:     | Victron Energy Multiplus 3000va/120amp |
| Generator:    | n/a                                    |
| Batteries:    | 1 Starter, 3 Leisure, 1 Bow Thruster   |
| Solar Panels: | n/a                                    |
| Notes:        |  |



Viewings by appointment  
only. Please call us to arrange.



## Galley

Cooker: Yes & 5 Burner Hob  
 Fridge/Freezer: Shoreline Fridge  
 Gas/12v/240v:: 12v  
 Additional Information: Beko Washing Machine  
 Granite Worktops. Freezer.

## Accommodation

No. of Berths: Three  
 Fixed: Fixed Double & Fixed Single  
 Additional Berths: Two Cabins.  
 Potential for additional berths within the saloon.

## Bathroom

Toilet: Pump Out  
 Bath / Shower: Large Shower  
 Vanity Basin: Yes  
 Additional Information:

## Vessel History

BSC/RCD: July 2027  
 Maintenance:

## Additional Information

Pram Cover. Side Hatch.

Please Note:

No guarantee is given or implied with regards to specification but descriptions are given in good faith. All vessels are sold without warranty or condition as to the fitness either expressed or implied by status or otherwise. No appliances or systems have been tested. All measurements stated are approximate. These details are not intended to, and do not, form any part of any current or future contract. In this transaction we are acting as Brokers only. All sales subject to contract. We are relying on information supplied solely by the seller and the Company cannot be held responsible or liable if information is proven to be inaccurate. All information is given as a guide. Plating thickness cannot be measured during Nationwide Boat Sales visit while the boat is in the water and is based on information supplied by the owner. A prospective buyer is strongly advised to check the particulars and where appropriate at their own expense to employ a qualified insured Marine Surveyor to carry out a survey of the vessel. It is ultimately the responsibility of the buyer to ensure that all the particulars are accurate prior or during the purchase of the boat. Nationwide Boat Sales advises that a qualified independent surveyor carries out a full out of water survey for every vessel.