



Over The Moon - Narrowboat

£59,950

Introducing Over The Moon, a 57ft Trad, built by Wedgewood Narrowboats in 2009. With a wealth of space and potential for additional berths within the saloon. Over The Moon would make an ideal liveaboard.

- Traditional Stern
- VetuS 42hp Engine
- 57ft by 6ft 10
- Burton-On-Trent



Scan here for the
3D Tour

Boat Specification

Plating Specification: Steel 10/6/4
Hull Shape: Flat Bottom
Flooring: Wooden
Cabin Sides: Ply
Insulation: Unknown
Windows: Single Glazed

Engine Details

Engine Make/Model: Vetus 42hp
No. Cylinders: 4
Cooling Type: Keel
Gear Box Make/Model: Technodrive
Fuel Type: Diesel
Fuel Tank Capacity: 40g approx
Bow Thruster: n/a
Additional Information:

Hot Water & Heating

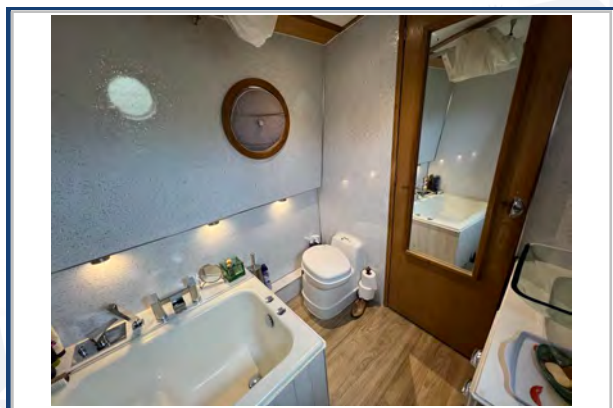
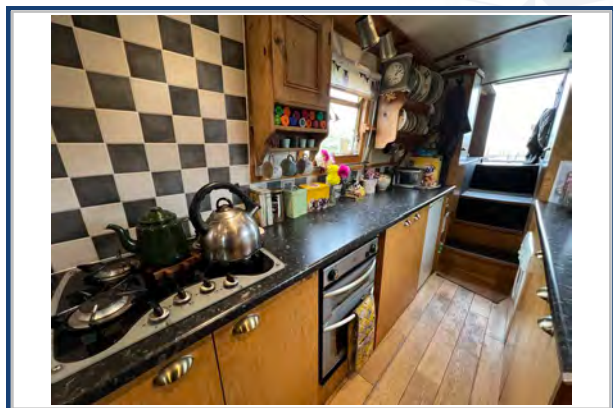
Hot Water Source: Calorifier/Immersion/Webasto
Central Heating: Webasto
Stove Make/Type: Solid Fuel
Water Tank Capacity: 100g approx

Electrical System

12v: Yes
240v: Yes
Inverter: Sterling Pure Sine 3kw Inverter/Charger
Generator: n/a
Batteries: 1 Starter, 5 Leisure (New 2023)
Solar Panels: n/a
Notes:



Viewings by appointment
only. Please call us to arrange.



Galley

Cooker: Spinflo Midi Prima MKII

Fridge/Freezer: Frigidaire with Ice Box

Gas/12v/240v:: 12v

Additional Information: 4 Burner Hob

Zanussi Aquacycle 1300 washing machine.

Accommodation

No. of Berths: Two

Fixed: Double

Additional Berths: Potential for additional berths within the saloon.

Bathroom

Toilet: Thetford Cassette

Bath / Shower: Shower over bath

Vanity Basin: Yes

Additional Information: Walkthrough Bathroom

Vessel History

BSC/RCD: BSC 2027

Maintenance: Blacked 2pack 2017.

Two coats of enamel added 2021.

Additional Information

Side hatch with fly screen.

Rudder will be replaced for the sale.

Please Note:

No guarantee is given or implied with regards to specification but descriptions are given in good faith. All vessels are sold without warranty or condition as to the fitness either expressed or implied by status or otherwise. No appliances or systems have been tested. All measurements stated are approximate. These details are not intended to, and do not, form any part of any current or future contract. In this transaction we are acting as Brokers only. All sales subject to contract. We are relying on information supplied solely by the seller and the Company cannot be held responsible or liable if information is proven to be inaccurate. All information is given as a guide. Plating thickness cannot be measured during Nationwide Boat Sales visit while the boat is in the water and is based on information supplied by the owner. A prospective buyer is strongly advised to check the particulars and where appropriate at their own expense to employ a qualified insured Marine Surveyor to carry out a survey of the vessel. It is ultimately the reasonability of the buyer to ensure that all the particulars are accurate prior or during the purchase of the boat. Nationwide Boat Sales advises that a qualified independent surveyor carries out a full out of water survey for every vessel.