



Rallentando - Narrowboat

£39,950

Introducing Rallentando, a wonderful 60ft Trad built by R & D Fabrications with an owner fit out in 1996. With a traditional charm and a wealth of space she could be the perfect home on the water.

- Traditional Stern
- BMC 1.5 Engine
- 60ft by 6ft 10'
- Warwickshire



Scan here for the
3D Tour

Boat Specification

Plating Specification: Steel
Hull Shape: Flat
Flooring: Carpet
Cabin Sides: Ply
Insulation: Unknown
Windows: Large Throughout.

Engine Details

Engine Make/Model: BMC 1.5
No. Cylinders: 4
Cooling Type: Keel
Gear Box Make/Model: PRM
Fuel Type: Diesel
Fuel Tank Capacity: 30G
Bow Thruster: n/a

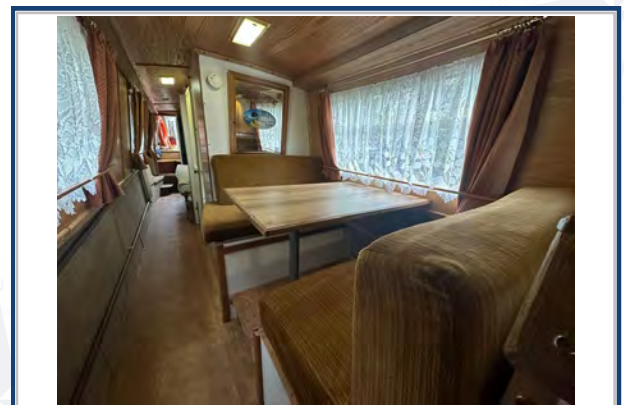
Additional Information:

Hot Water & Heating

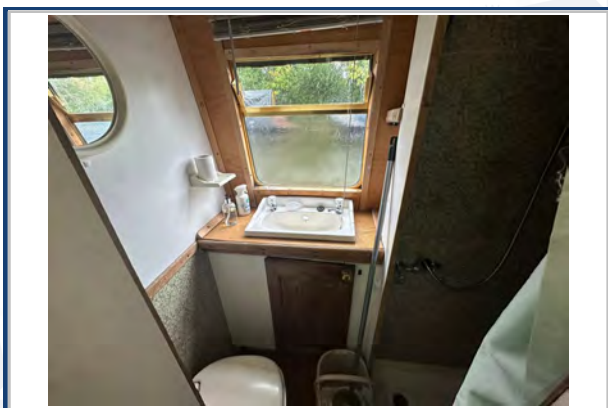
Hot Water Source: Calorifier
Central Heating: Backboiler
Stove Make/Type: Morso Squirrel
Water Tank Capacity: 200G

Electrical System

12v: Yes
240v: Yes
Inverter: 600w
Generator: n/a
Batteries: 1 Starter, 3 Leisure
Solar Panels: One solar panel
Notes:



Viewings by appointment
only. Please call us to arrange.



Galley

Cooker: Stoves Newhome with 4 burner hob
 Fridge/Freezer: Beko
 Gas/12v/240v:: 12v
 Additional Information: Beko Washing Machine

Accommodation

No. of Berths: Four
 Fixed: Double
 Additional Berths: Dinette conversion

Bathroom

Toilet: Cassette
 Bath / Shower: Shower
 Vanity Basin: Yes
 Additional Information:

Vessel History

BSC/RCD: BSC June 2024
 Maintenance: Blacked 2019.

Additional Information

Please Note:

No guarantee is given or implied with regards to specification but descriptions are given in good faith. All vessels are sold without warranty or condition as to the fitness either expressed or implied by status or otherwise. No appliances or systems have been tested. All measurements stated are approximate. These details are not intended to, and do not, form any part of any current or future contract. In this transaction we are acting as Brokers only. All sales subject to contract. We are relying on information supplied solely by the seller and the Company cannot be held responsible or liable if information is proven to be inaccurate. All information is given as a guide. Plating thickness cannot be measured during Nationwide Boat Sales visit while the boat is in the water and is based on information supplied by the owner. A prospective buyer is strongly advised to check the particulars and where appropriate at their own expense to employ a qualified insured Marine Surveyor to carry out a survey of the vessel. It is ultimately the responsibility of the buyer to ensure that all the particulars are accurate prior or during the purchase of the boat. Nationwide Boat Sales advises that a qualified independent surveyor carries out a full out of water survey for every vessel.