



Lily - Narrowboat

£124,950

Introducing Lily, a magnificent 70ft Trad built by R.W Davis and Sons in 2014. With a boatman's cabin and a wonderful engine room housing the Ailsa Craig RM4 engine. A truly wonderful vessel.

- Traditional Stern
- Ailsa Craig RM4 Engine
- 70ft by 6ft 10'
- Warwickshire



Scan here for the
3D Tour

Boat Specification

Plating Specification: Steel 10/6/4
Hull Shape: Flat
Flooring: Solid Wood
Cabin Sides: Painted Ply
Insulation: Unknown
Windows: Portholes

Engine Details

Engine Make/Model: Ailsa Craig RM4
No. Cylinders: 4
Cooling Type: Keel
Gear Box Make/Model: Unknown
Fuel Type: Diesel
Fuel Tank Capacity: 40G approx
Bow Thruster: Unknown
Additional Information:

Hot Water & Heating

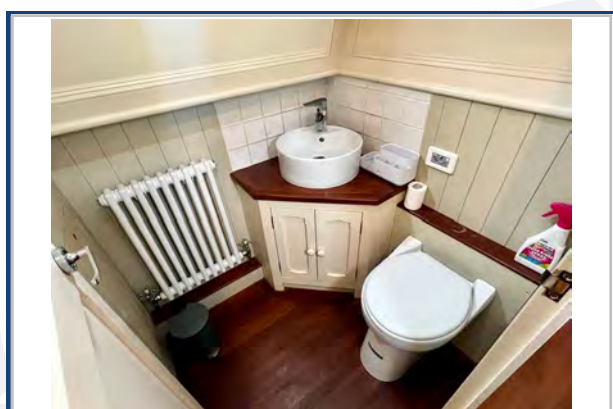
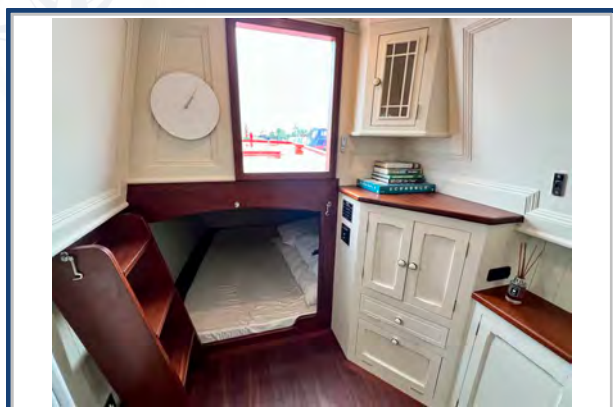
Hot Water Source: Calorifier/Heritage Stove
Central Heating: Heritage Stove
Stove Make/Type: Yes
Water Tank Capacity: 100G approx

Electrical System

12v: Yes
240v: Yes
Inverter: Victron Quattro 3kw
Generator: Beta Generator 9kva
Batteries: 1 Starter, 4 Leisure
Solar Panels: Solar Panels
Notes: MPPT Controller



**Viewings by appointment
only. Please call us to arrange.**



Galley

Cooker: Heritage Range Cooker (Oil Fired)
Fridge/Freezer: Shoreline
Gas/12v/240v:: 12v
Additional Information: LG Washing Machine
Solid Wood handmade galley.

Accommodation

No. of Berths: Six
Fixed: Double under bow.
Additional Berths: Dinette Conversion & Pull down within the boatman's cabin.

Bathroom

Toilet: Sani Marin
Bath / Shower: Shower
Vanity Basin: Yes
Additional Information:

Vessel History

BSC/RCD: BSC 2026
Maintenance: Blacked 2021. Engine Serviced 2022

Additional Information

Boatman's Cabin. Engine Room. 4 Side Hatches.

Please Note:

No guarantee is given or implied with regards to specification but descriptions are given in good faith. All vessels are sold without warranty or condition as to the fitness either expressed or implied by status or otherwise. No appliances or systems have been tested. All measurements stated are approximate. These details are not intended to, and do not, form any part of any current or future contract. In this transaction we are acting as Brokers only. All sales subject to contract. We are relying on information supplied solely by the seller and the Company cannot be held responsible or liable if information is proven to be inaccurate. All information is given as a guide. Plating thickness cannot be measured during Nationwide Boat Sales visit while the boat is in the water and is based on information supplied by the owner. A prospective buyer is strongly advised to check the particulars and where appropriate at their own expense to employ a qualified insured Marine Surveyor to carry out a survey of the vessel. It is ultimately the reasonability of the buyer to ensure that all the particulars are accurate prior or during the purchase of the boat. Nationwide Boat Sales advises that a qualified independent surveyor carries out a full out of water survey for every vessel.