



Albatross - Dutch Barge

£49,950

Introducing Albatross, a lovely 41ft by 10ft Dutch Barge. Built by New Holland in 1930 with a professional fit out. Providing 2 berths offered as a fixed double within the aft cabin. She provides a spacious wheelhouse with its own fuel stove.

- Dutch Barge
- Peugeot Engine
- 41ft by 10ft
- Gloucestershire



Scan here for the
3D Tour

Boat Specification

Plating Specification:	Steel
Hull Shape:	Flat
Flooring:	Solid Wood
Cabin Sides:	Tongue & Groove
Insulation:	Kingspan
Windows:	Large Throughout

Engine Details

Engine Make/Model:	Peugeot
No. Cylinders:	4
Cooling Type:	Water
Gear Box Make/Model:	Hurth
Fuel Type:	Diesel
Fuel Tank Capacity:	30g Approx
Bow Thruster:	Dutch
Additional Information:	

Hot Water & Heating

Hot Water Source:	Cointra Wall Mounted Heater
Central Heating:	Backboiler
Stove Make/Type:	2 Fuel Stoves (Wheelhouse & Fore Cabin)
Water Tank Capacity:	3 Water Tanks - 80g Approx Total

Electrical System

12v:	Yes
240v:	Yes
Inverter:	1000kva
Generator:	n/a
Batteries:	1 Starter, 4 Leisure, 1 Bow Thruster
Solar Panels:	1 x 270w
Notes:	Galvanic Isolator



**Viewings by appointment
only. Please call us to arrange.**



Galley

Cooker: Gas 2 burner hob
Fridge/Freezer: Swan with freezer compartment
Gas/12v/240v:: 240v
Additional Information: Red Cedar Worktops



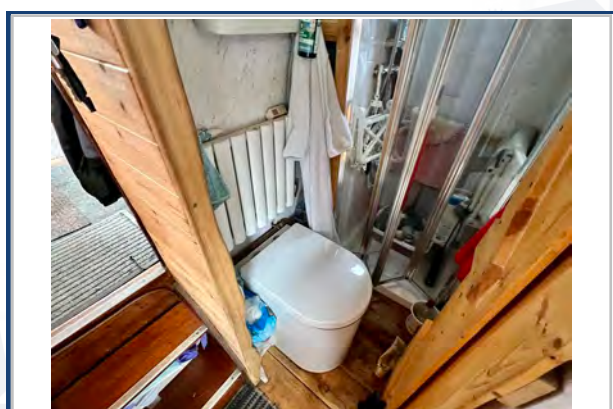
Accommodation

No. of Berths: 2
Fixed: Double Bed within aft cabin
Additional Berths: n/a



Bathroom

Toilet: Compost
Bath / Shower: Shower
Vanity Basin: n/a
Additional Information:



Vessel History

BSC/RCD: BSC May 2025
Maintenance: Blacked Dec 2021.

Additional Information

Recent Survey December 2021

Please Note:

No guarantee is given or implied with regards to specification but descriptions are given in good faith. All vessels are sold without warranty or condition as to the fitness either expressed or implied by status or otherwise. No appliances or systems have been tested. All measurements stated are approximate. These details are not intended to, and do not, form any part of any current or future contract. In this transaction we are acting as Brokers only. All sales subject to contract. We are relying on information supplied solely by the seller and the Company cannot be held responsible or liable if information is proven to be inaccurate. All information is given as a guide. Plating thickness cannot be measured during Nationwide Boat Sales visit while the boat is in the water and is based on information supplied by the owner. A prospective buyer is strongly advised to check the particulars and where appropriate at their own expense to employ a qualified insured Marine Surveyor to carry out a survey of the vessel. It is ultimately the reasonability of the buyer to ensure that all the particulars are accurate prior or during the purchase of the boat. Nationwide Boat Sales advises that a qualified independent surveyor carries out a full out of water survey for every vessel.