



WIDEBEAM

Le Grand Bleu

60ft by 11ft Widebeam Cruiser

Built by Liverpool Boats

£74,950.00



Tel: 01889 881960

Email: enquiries@nationwideboatsales.co.uk

Web: www.nationwideboatsales.co.uk

Built by Liverpool Boats with a professional fit out in 2008.

General Information

Plating Specification: Steel 10/6/5/4

Hull Type: Flat

Flooring: Wood & Tiles

Cabin Sides: Ply

Insulation: Sprayfoam

Notes:

Engine Specification & Components

Engine Make: Isuzu 55hp

Number of Cylinders: 4

Cooling Type: Water

Gear Box Make: Vetus

Diesel Tank Capacity: 40g approx

Notes: Twin Alternators.

Hot Water & Heating Systems

Source of Hot Water: Calorifier / Webasto

Central Heating: Webasto

Solid Fuel Stove: Multi Fuel Stove

Water Tank Capacity: 100g approx

Notes:

Electrical Systems & Components

12v: Yes

240v Landline: Yes

Inverter: Victron Phoenix Smart Inverter 3kw

Generator: Electrolux 3.5kva Travel Pack

Batteries: 1 starter, 4 leisure

Notes: 2 Solar Panels.

MPPT Smart Solar Charge Controller





Galley Specification

Cooker: Belling oven, grill & 4 Burner Hob

Fridge: Waeco with freezer compartment

Gas / 12v / 240v: 12v

Additional Information:



Bathroom Specification

Type of Toilet: Porta Pottie

Bath / Shower fitted: Full Size Shower

Vanity Basin: Yes

Notes:



Berths

Fixed Berths: Fixed Double

Extra Berths: n/a

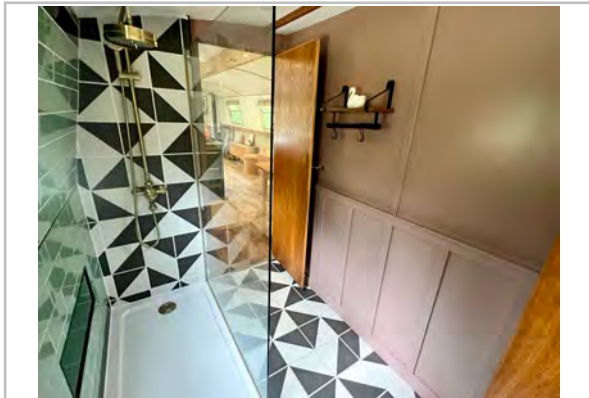
Vessel History

BSC Feb 2025

Maintenance: Blacked Feb 2021 with 8 Anodes

Recent Survey: 2021

Mooring Available: Yes (subject to availability)



Additional Information

Side Hatch. A Frame on the bow.

There is work required on the boat and this is reflected in the price.

Please see photos and the virtual 3d tour to see the work required

Please note:

No guarantee is given or implied with regards to specification but descriptions are given in good faith. All vessels are sold without warranty or condition as to the fitness either expressed or implied by status or otherwise. No appliances or systems have been tested. All measurements stated are approximate. These details are not intended to, and do not, form any part of any current or future contract. In this transaction we are acting as Brokers only. All sales subject to contract. We are relying on information supplied solely by the seller and the Company cannot be held responsible or liable if information is proven to be inaccurate. All information is given as a guide. Plating thickness cannot be measured during Nationwide Boat Sales visit while the boat is in the water and is based on information supplied by the owner. A prospective buyer is strongly advised to check the particulars and where appropriate at their own expense to employ a qualified insured Marine Surveyor to carry out a survey of the vessel.

It is ultimately the responsibility of the buyer to ensure that all the particulars are accurate prior or during the purchase of the boat. Nationwide Boat Sales advises that a qualified independent surveyor carries out a full out of water survey for every vessel.