

NATIONWIDE Boat Sales



NARROWBOAT

UnNamed

58.5ft Semi-Trad

Hand built by Dave Freeman Marine & Factory Boats

£129,950.00



Tel: 01889 881960

Email: enquiries@nationwideboatsales.co.uk

Web: www.nationwideboatsales.co.uk

**BRITISH
MARINE**
BOAT RETAILERS
& BROKERS

Hand built by Dave Freeman Marine & Factory Boats with a professional fit out.



General Information

Plating Specification: Steel 10/6/5/4

Hull Type: Flat

Flooring: Solid English Oak & Marble effect tiles

Cabin Sides: Painted Ply

Insulation: Sprayfoam

Notes: 8 Anodes



Engine Specification & Components

Engine Make: Barrus Shire 43hp*

Number of Cylinders: 4

Cooling Type: Keel

Gear Box Make: PRM 150

Diesel Tank Capacity: 250L

Notes: Twin Alternators.

*Luxury installation with sound proofing and deluxe control panel



Hot Water & Heating Systems

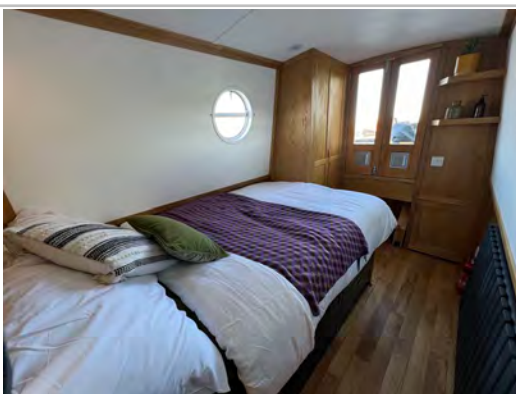
Source of Hot Water: Calorifier/Webasto/Immersion

Central Heating: Webasto

Solid Fuel Stove: Heron Multi Fuel

Water Tank Capacity: 485L

Notes: Insulated Stainless Steel water tank with capacity gauge



Electrical Systems & Components

12v: Yes

240v Landline: Yes

Inverter: Victron Multiplus 3000

Generator: n/a

Batteries: 1 starter, 5 leisure

Notes: Victron Galvanic Isolator. Victron Battery Monitor.

Sound Sytem with in boat bluetooth and DAB radio.

LED lit cuboards and stairs.



Galley Specification

Cooker: Thetford Double oven & separate 3 burner hob

Fridge: Shoreline Fridge/Freezer

Gas / 12v / 240v: 12v

Additional Information: Bespoke kitchen, solid worktops

Washing Machine Hi Sense 6kg, Microwave



Bathroom Specification

Type of Toilet: Sanimarin Exclusive Macerator

Bath / Shower fitted: Wet Room

Vanity Basin: Yes

Notes: Walkthrough Bathroom

Slate Effect Base, Marble effect tiles



Berths

Fixed Berths: Bespoke birch plywood double extendable bed

Extra Berths: L shaped Dinette conversion to double

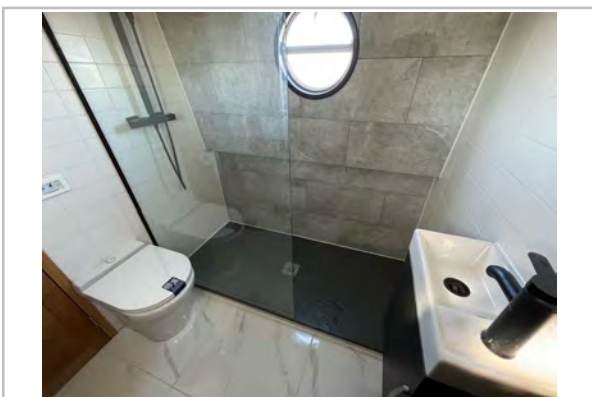
Vessel History

BSC RCD

Maintenance: Blacked.

Recent Survey: n/a

Mooring Available: Yes (subject to availability)



Additional Information

2 x Side Hatches. Oak lined pigeon box. Double glazed front and rear bulkhead doors.

Fully grit blasted shell.

12 Month Warranty

Please note:

No guarantee is given or implied with regards to specification but descriptions are given in good faith. All vessels are sold without warranty or condition as to the fitness either expressed or implied by status or otherwise. No appliances or systems have been tested. All measurements stated are approximate. These details are not intended to, and do not, form any part of any current or future contract. In this transaction we are acting as Brokers only. All sales subject to contract. We are relying on information supplied solely by the seller and the Company cannot be held responsible or liable if information is proven to be inaccurate. All information is given as a guide. Plating thickness cannot be measured during Nationwide Boat Sales visit while the boat is in the water and is based on information supplied by the owner. A prospective buyer is strongly advised to check the particulars and where appropriate at their own expense to employ a qualified insured Marine Surveyor to carry out a survey of the vessel.

It is ultimately the responsibility of the buyer to ensure that all the particulars are accurate prior or during the purchase of the boat. Nationwide Boat Sales advises that a qualified independent surveyor carries out a full out of water survey for every vessel.